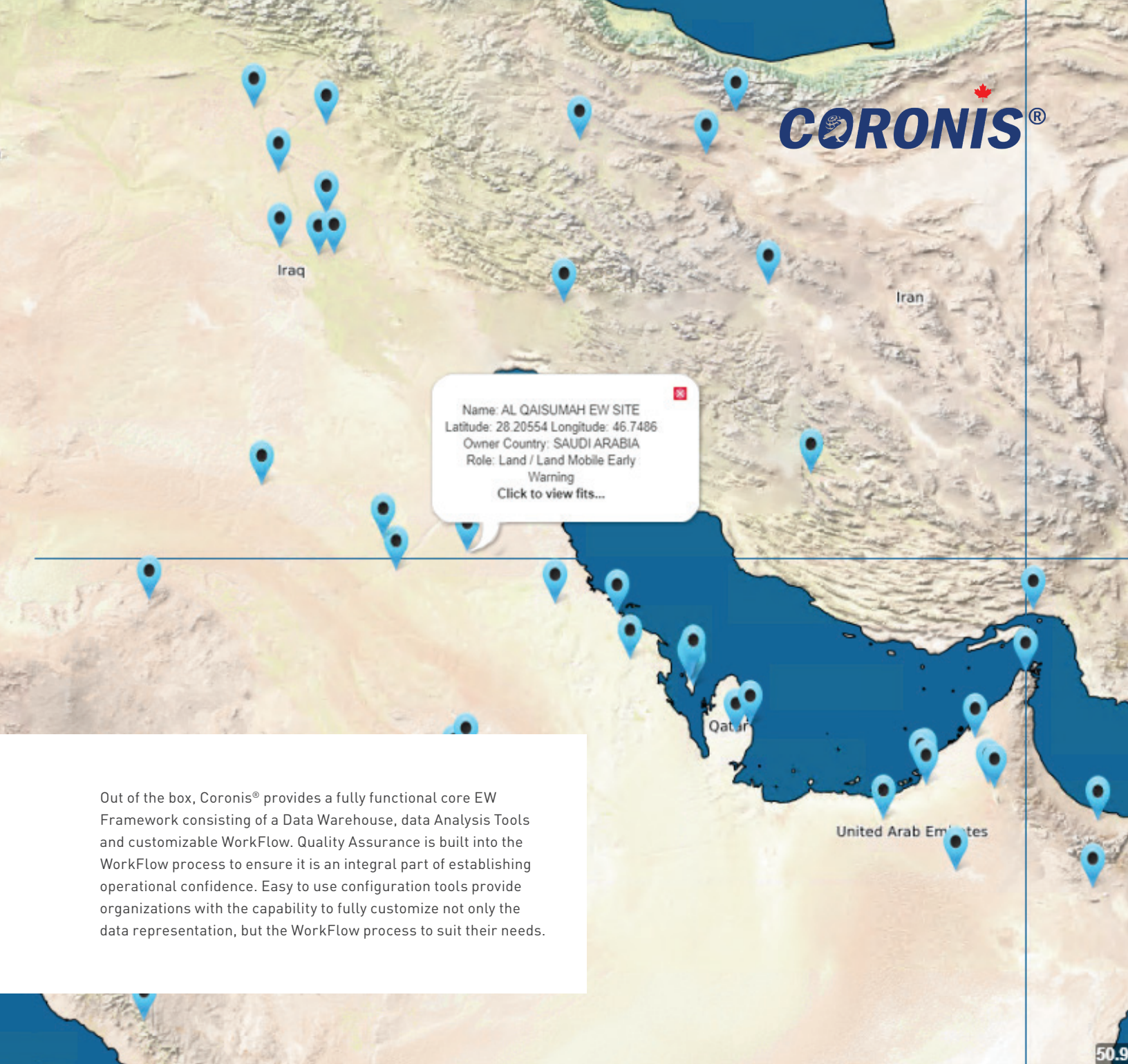




# Coronis<sup>®</sup>

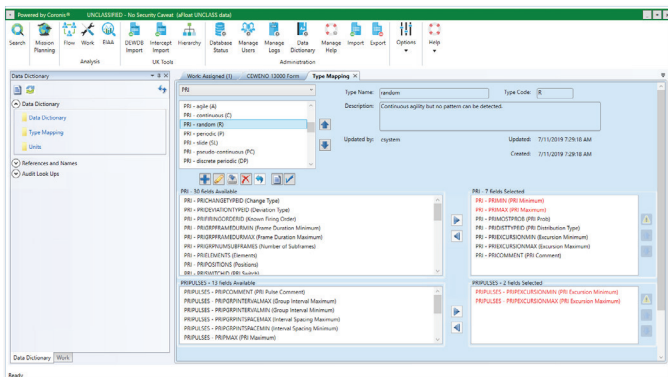
Coronis<sup>®</sup> - Electronic Warfare Operational Support application providing the complete end-to-end environment for all of your Electronic Warfare Systems.





Name: AL QAISUMAH EW SITE  
 Latitude: 28.20554 Longitude: 46.7486  
 Owner Country: SAUDI ARABIA  
 Role: Land / Land Mobile Early Warning  
 Click to view fits...

Out of the box, Coronis® provides a fully functional core EW Framework consisting of a Data Warehouse, data Analysis Tools and customizable WorkFlow. Quality Assurance is built into the WorkFlow process to ensure it is an integral part of establishing operational confidence. Easy to use configuration tools provide organizations with the capability to fully customize not only the data representation, but the WorkFlow process to suit their needs.



# Cohesive EW Operations

At the heart of Coronis® is the Data Warehouse which provides a single consolidated data repository for all EW Operations. The Data Warehouse is used to generate Mission Data for all Customer EW assets ensuring cohesive operation of all EW assets.

# Extensible and Flexible



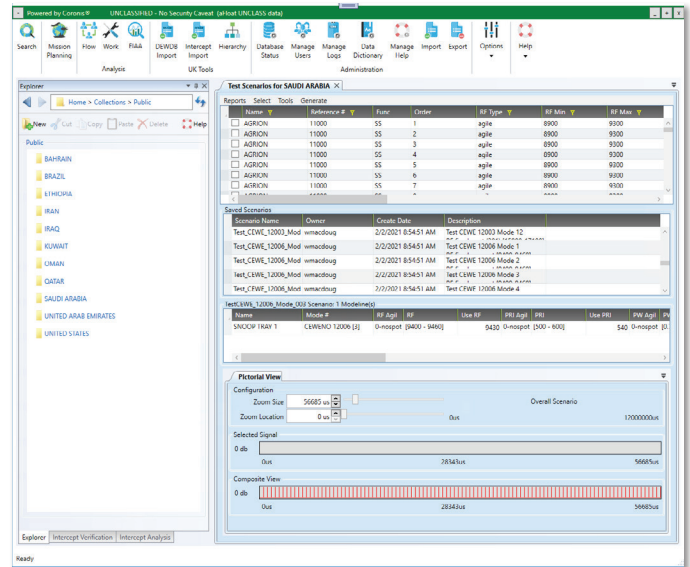
Designed with extensibility and flexibility in mind, Coronis® keeps pace with an ever changing EW landscape and provides a feature rich User experience.

Organizations can choose between Oracle, SQL Server or Oracle XE database engines. Other database engines can be implemented if required.

Simplified data model extensions allow for inclusion of any format. Acoustic, Communication, Electro-Optic and Infrared, IED remote detonation, and many more. Coronis® improves the ability to support data fusion for battlefield awareness, ship and aircraft Command and Control, Civil unrest and emergency situations, and maritime enforcement agencies.

## SCALABLE

Instantiations of Coronis® can be layered in a hierarchical nature. Configurations include stand-alone (i.e. laptop), client/server application and web-based applications.



# Core Tools

The Coronis® core Toolset includes Ambiguity Analysis, Intercept Analysis, WorkFlow with Quality Assurance, Customizable Data Outputs, Mission Planning and general OOB, EOB, Emitter, Platform and Weapon Reports.

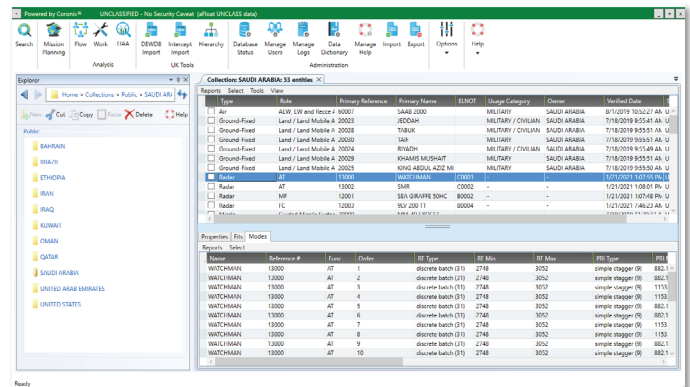
The Customizable Data Output tool can create tailored xml or csv outputs for import into OEM Mission Data generators and other third party tools.

## CUSTOM TOOLS

The Coronis® architecture provides a framework for the addition of custom tools to address requirements unique to each organization. Automated data importing and purpose built Mission Data Generators are but two of the possibilities.

**IMPORTS** - Source data import tools provide a powerful, efficient and accurate time saving tool by avoiding manual data entry that is prone to error. Lockheed Martin Canada has extensive experience in creating custom data imports in many formats including csv, xml, binary, fixed message format (Intercept), database to database, etc.

**MISSION DATA GENERATORS** - Built to meet the specific requirements for each individual EW system, Coronis® MDGs automatically provide fully colorised data in OEM mission data format. Colourisation is rules based, ensuring accuracy of cohesive Mission Libraries that are guaranteed reproducible.



# The Future of EWOS

The latest chapter in Lockheed Martin Canada's history of EW Operational Support Environments - Coronis® - brings a next generation solution to maximize operational effectiveness in support of current and future EW systems and operations.

If you are interested in Coronis®, visit our website to learn more: [www.lockheedmartin.com/en-ca/ew.html](http://www.lockheedmartin.com/en-ca/ew.html)

For more information, please contact:

Simon Hughes, Business Development, Lockheed Martin Canada  
t: 613-895-3056 e: [simon.r.hughes@lmco.com](mailto:simon.r.hughes@lmco.com)



Lockheed Martin.  
Your Mission is Ours.®

